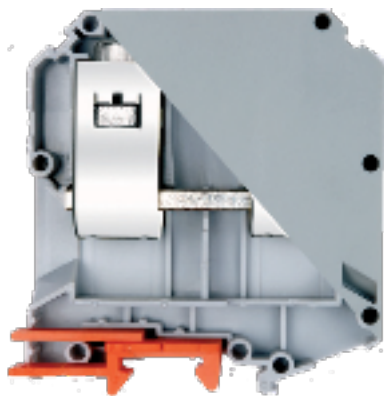


KUT 95



Approvals



General Data

Type	KUT 95
Wire Termination Technology	Screw Clamp
Ratings	1000 V/232 A/95 sq mm/20 Nm
GTIN / Harmonize Custom Code	85389000
Standard Packing Qty (in No)	10
Country of Origin	India
Screw Size	M8

Dimensions & Weight

Height (mm)	90
Height (inches)	3.56
Width (mm)	83
Width (inches)	3.27
Thickness (mm)	25
Weight For Standard Packing Qty (Kg)	2.25

Material Data

Housing	PA 6,6
Standard Colour	Grey
Other Color Variants	Black, Blue, Green, Khakhi, Red, Yellow

Rated Conductor Size

Stranded Wire - min (sq mm)	25
Stranded Wire - max (sq mm)	95
Solid Wire - min (sq mm)	25
Solid Wire - max (sq mm)	120

Ratings - IEC

Standard	IEC 60947-7-1
Rated Voltage (V)	1000
Rated Current (A)	232
Rated Cross Section (sq mm)	25
Short Time Withstand Current (kA)	11.40
Rated Impulse Withstand Voltage(kV)	8
Pollution Degree	III

Ratings-ATEX

Certificate No	1000
Rated Current (A)	232
Rated Cross Section (sq mm)	95

Ratings-CSA

Rated Voltage (V)	600
Rated Current (A)	230
Wire Cross Section - min (AWG)	2

Wire Cross Section - max (AWG)

4/0

Ratings-uL

Rated Voltage (V)

600

Rated Current (A)

230

Conductor Size - min (AWG)

2

Conductor Size - max (AWG)

4/0

Accessories

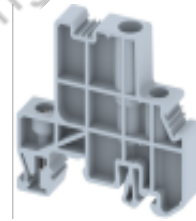
End Clamp

SCUDD

Height : 50 mm

Width : 55.50 mm

Thickness : 10 mm

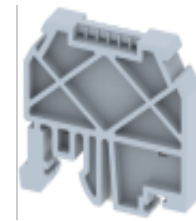


SCUSL

Height : 41 mm

Width : 47.50 mm

Thickness : 8 mm



Marking Label

LABEL KN17



Mounting Channel (Standard Lengths 300 mm, 500 mm, 1000 mm)

